

The Kodcanuja



A QUICK POSSESSION OPPORTUNITY

PRICED AT

\$999,900 *

*PRICE SUBJECT TO CHANGE WITHOUT NOTICE.
PLUS APPLICABLE TAXES, E.&OE.

20-796

**KUIPERS CRESCENT
AT KUIPERS PEAK**



PROPERTY SUMMARY

Property Type | Semi-Detached Title | Strata

Neighbourhood | Kuipers Peak Parking | Double Car Garage

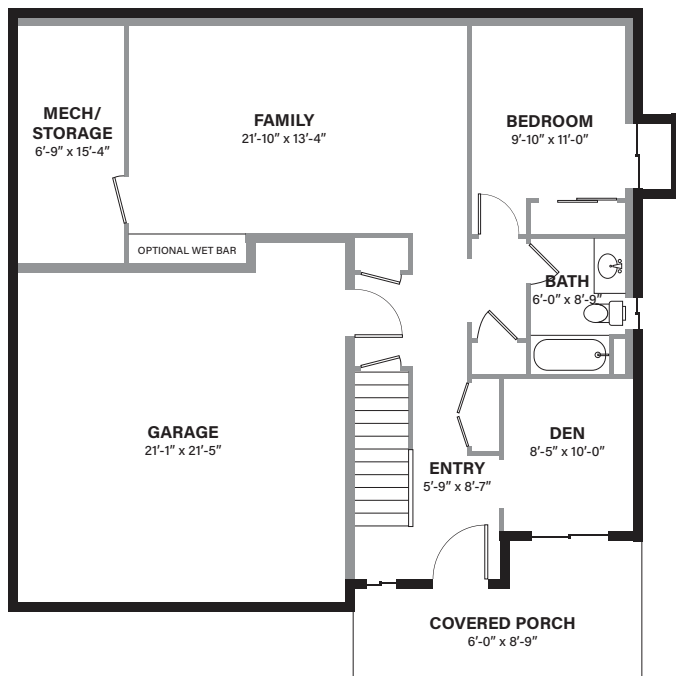
Bedrooms | 3

Bathrooms | 3

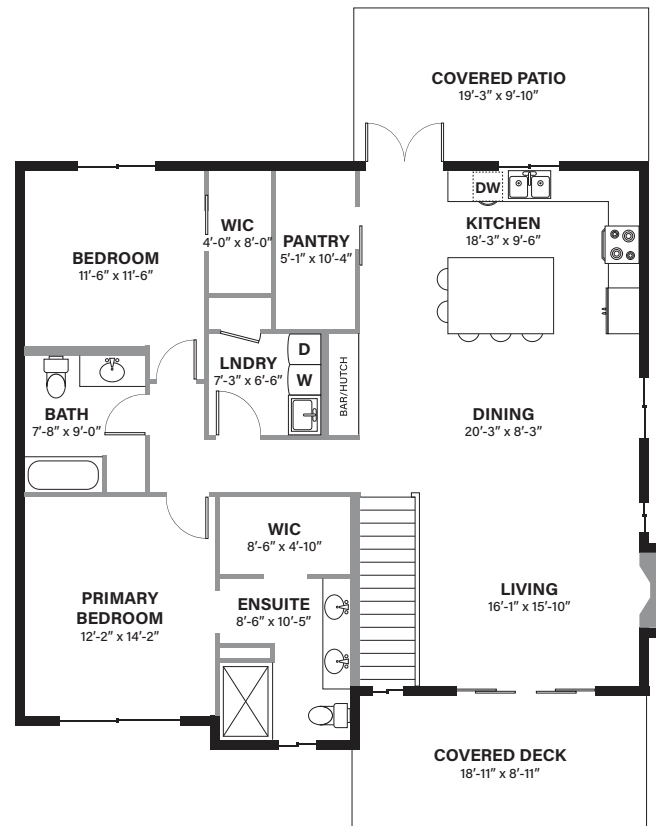
HOME FEATURES WE THINK YOU'LL LOVE

- Designer-inspired sandstone colour scheme
- Main level living featuring the great room, kitchen, master bedroom, ensuite bathroom, and laundry
- Luxury vinyl plank floors in all bedrooms and on the stairs
- Two-tone cabinetry
- L-shaped kitchen with island
- Walk-in pantry
- Silgranit kitchen sink
- Luxurious 4-piece ensuite including tiled shower bench
- Matte black fixture package
- Half-tile fireplace with mantel above
- Built-in 8' wet bar
- Covered patio, deck, and porch
- Rough-in for gas BBQ

ENTRY LEVEL



WALK-UP LEVEL



ENTRY LEVEL | 863 SQ. FT. WALK-UP LEVEL | 1483 SQ. FT. TOTAL | 2346 TOTAL SQ. FT.

In a continuing effort to improve our product offering, we reserve the right to modify or change the floor plans and specifications without notice. Floor plans are conceptual marketing drawings only. All dimensions and sizes are approximate. E&OE.



TARYN TYMOFICHUK

250-258-9838

ttymofichuk@emilanderson.ca