

KUIPERS PEAK

UNIT 23 - 796 KUIPERS CRESCENT

3 BEDROOM | 3 BATHROOM

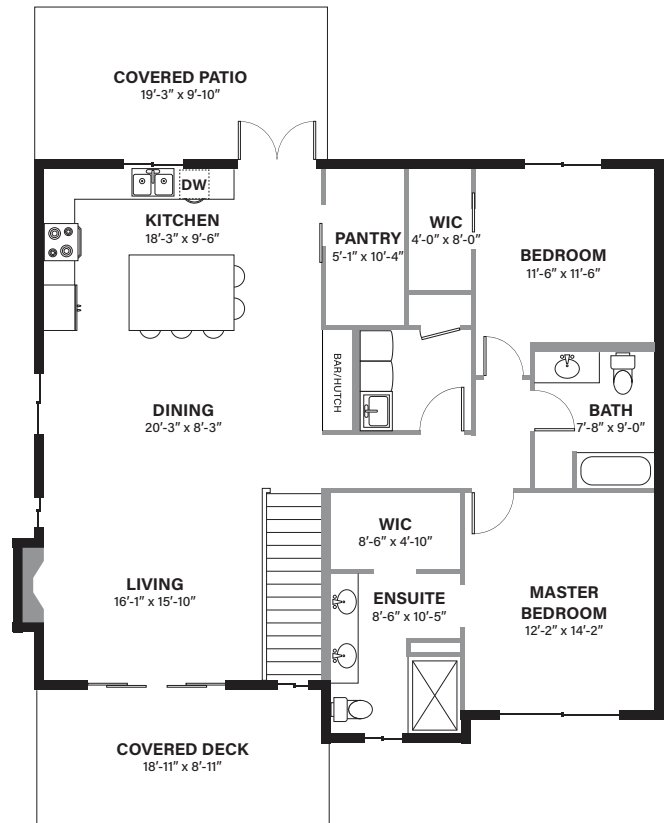
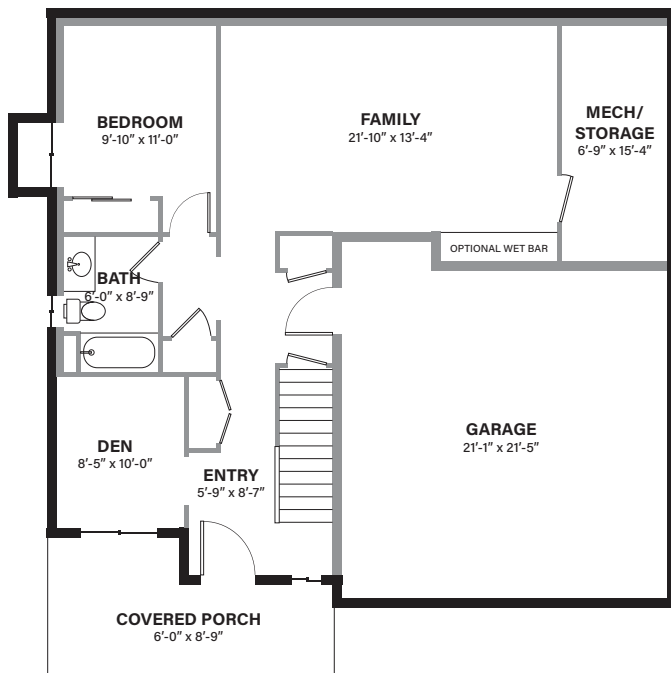
MAIN LEVEL 863 SQ FT | UPPER LEVEL 1483 SQ FT

LIVING SPACE | 2346 SQ FT



MAIN LEVEL

UPPER LEVEL



In a continuing effort to improve our product, we reserve the right to modify or change the plans and specifications without notice. Floor plans and renderings are conceptual marketing drawings only. All dimensions and sizes are approximate. E&OE.

CONTACT TARYN TYMOFICHUK | 250-258-9838 | ttymofichuk@emilanderson.ca

KUIPERS PEAK

UNIT 24 - 796 KUIPERS CRESCENT

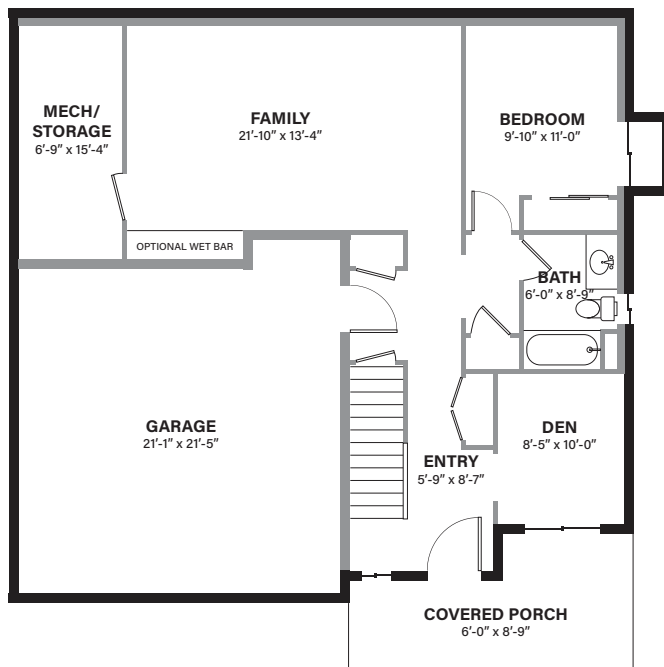
3 BEDROOM | 3 BATHROOM

MAIN LEVEL 863 SQ FT | UPPER LEVEL 1483 SQ FT

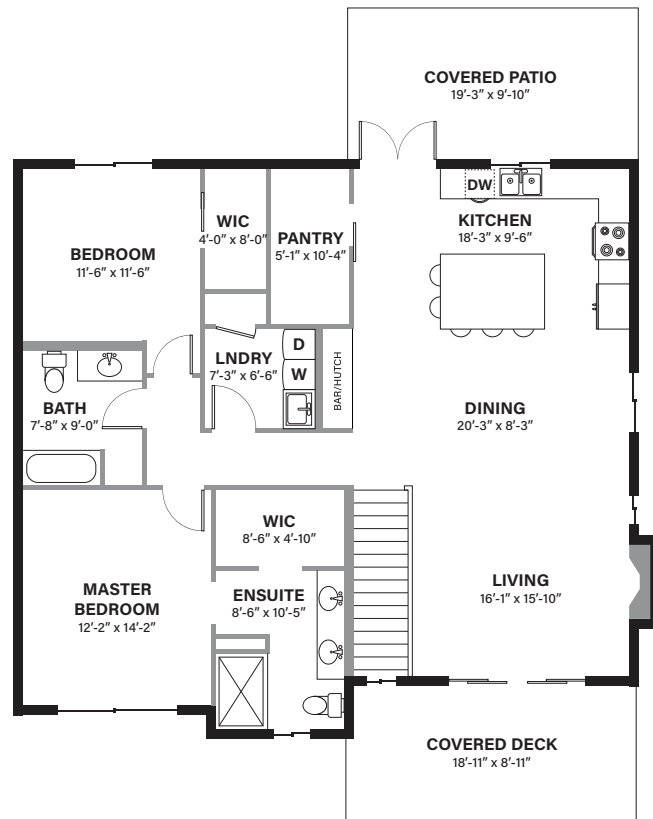
LIVING SPACE | 2346 SQ FT



MAIN LEVEL



UPPER LEVEL



In a continuing effort to improve our product, we reserve the right to modify or change the plans and specifications without notice. Floor plans and renderings are conceptual marketing drawings only. All dimensions and sizes are approximate. E&OE.

CONTACT TARYN TYMOFICHUK | 250-258-9838 | ttymofichuk@emilanderson.ca

KUIPERS PEAK

UNIT 25 - 796 KUIPERS CRESCENT

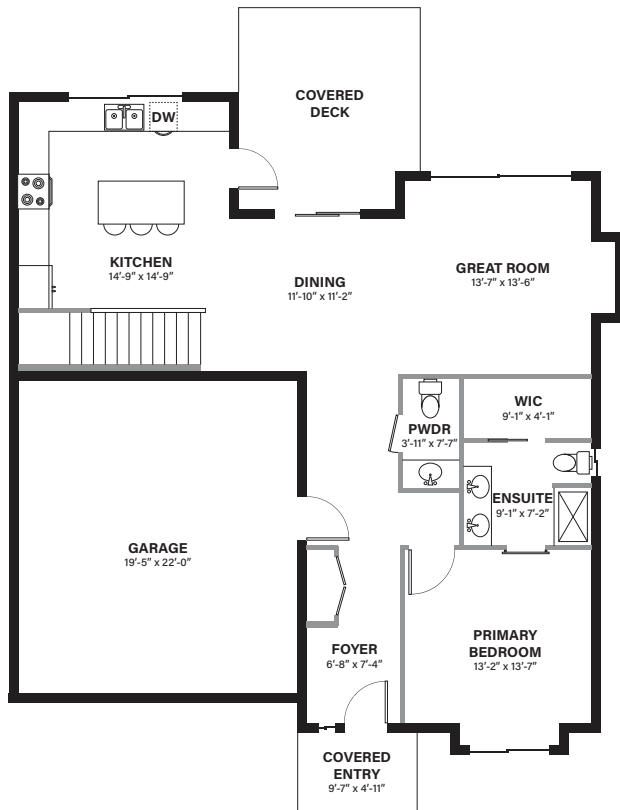
3 BEDROOM | 2.5 BATHROOM

MAIN LEVEL 1187 SQ FT | WALK-OUT LEVEL 937 SQ FT

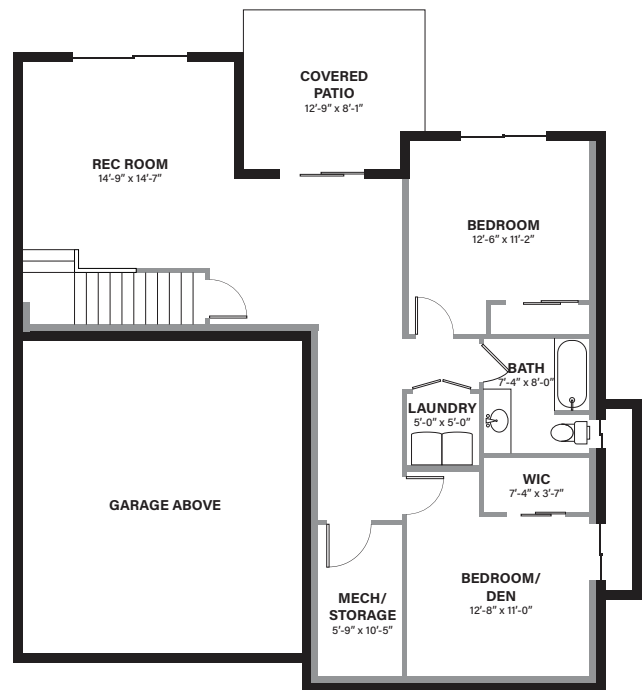
LIVING SPACE | 2124 SQ FT



MAIN LEVEL



WALK-OUT LEVEL



In a continuing effort to improve our product, we reserve the right to modify or change the plans and specifications without notice. Floor plans and renderings are conceptual marketing drawings only. All dimensions and sizes are approximate. E&OE.

CONTACT TARYN TYMOFICHUK | 250-258-9838 | ttymofichuk@emilanderson.ca

KUIPERS PEAK

UNIT 26 - 796 KUIPERS CRESCENT

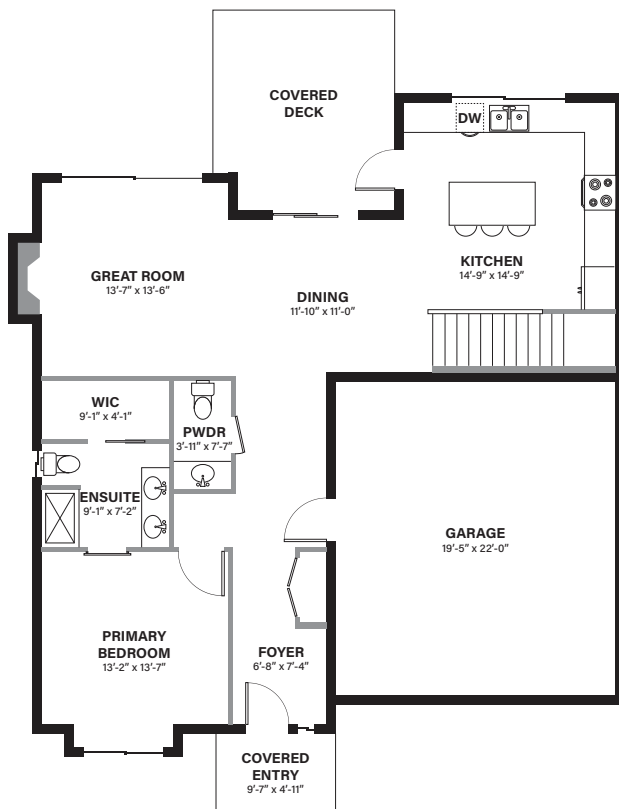
3 BEDROOM | 2.5 BATHROOM

MAIN LEVEL 1187 SQ FT | WALK-OUT LEVEL 937 SQ FT

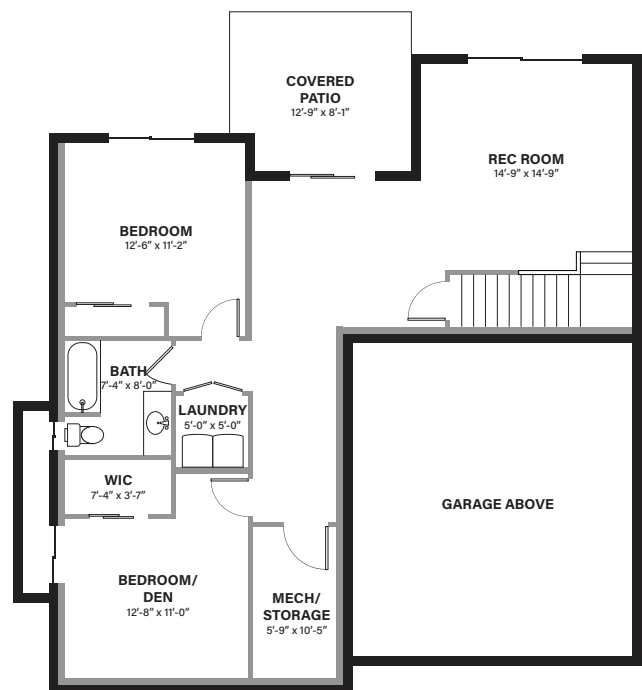
LIVING SPACE | 2124 SQ FT



MAIN LEVEL



WALK-OUT LEVEL



In a continuing effort to improve our product, we reserve the right to modify or change the plans and specifications without notice. Floor plans and renderings are conceptual marketing drawings only. All dimensions and sizes are approximate. E&OE.

CONTACT TARYN TYMOFICHUK | 250-258-9838 | ttymofichuk@emilanderson.ca

KUIPERS PEAK

UNIT 27 - 796 KUIPERS CRESCENT

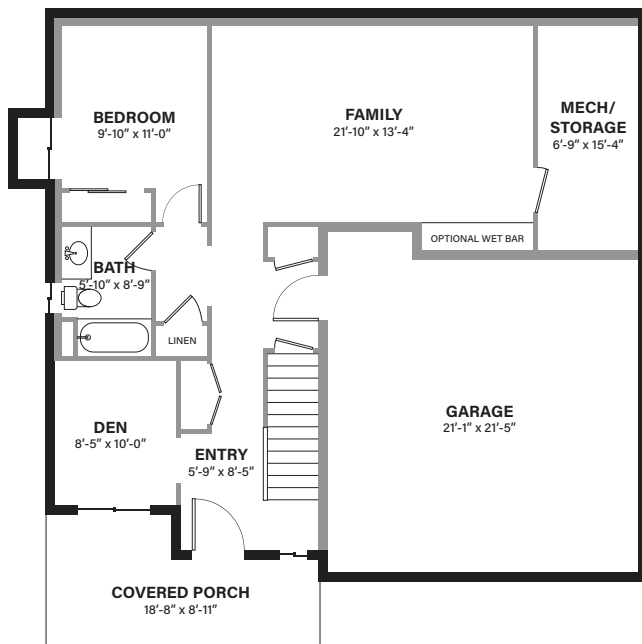
3 BEDROOM | 3 BATHROOM

MAIN LEVEL 863 SQ FT | UPPER LEVEL 1483 SQ FT

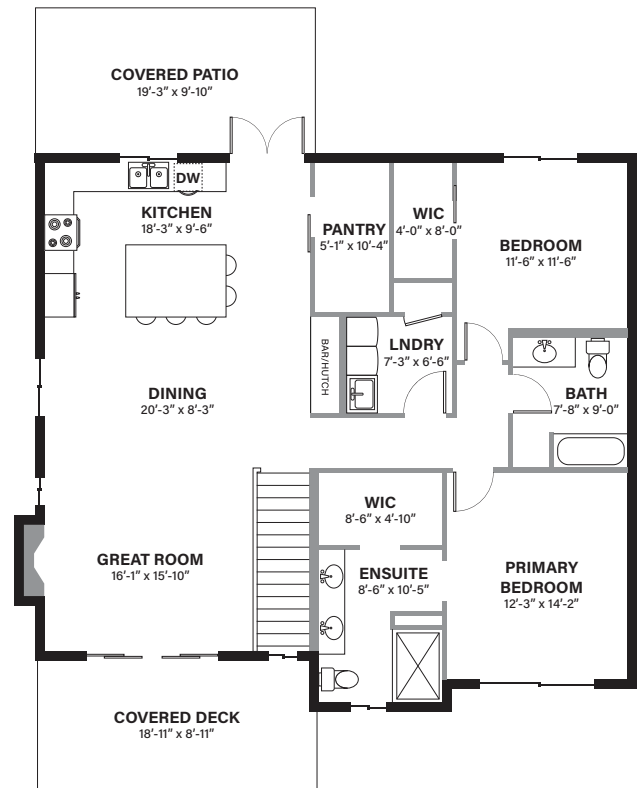
LIVING SPACE | 2346 SQ FT



MAIN LEVEL



UPPER LEVEL



In a continuing effort to improve our product, we reserve the right to modify or change the plans and specifications without notice. Floor plans and renderings are conceptual marketing drawings only. All dimensions and sizes are approximate. E&OE.

CONTACT TARYN TYMOFICHUK | 250-258-9838 | ttymofichuk@emilanderson.ca

KUIPERS PEAK

UNIT 28 - 796 KUIPERS CRESCENT

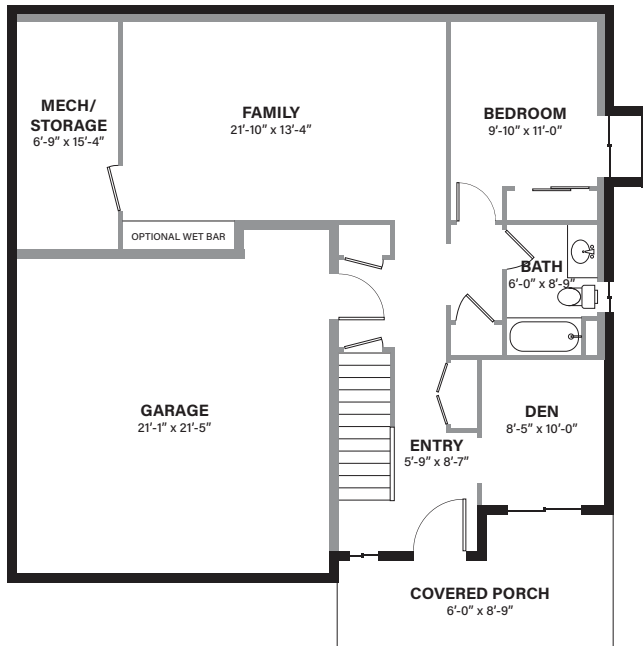
3 BEDROOM | 3 BATHROOM

MAIN LEVEL 863 SQ FT | UPPER LEVEL 1483 SQ FT

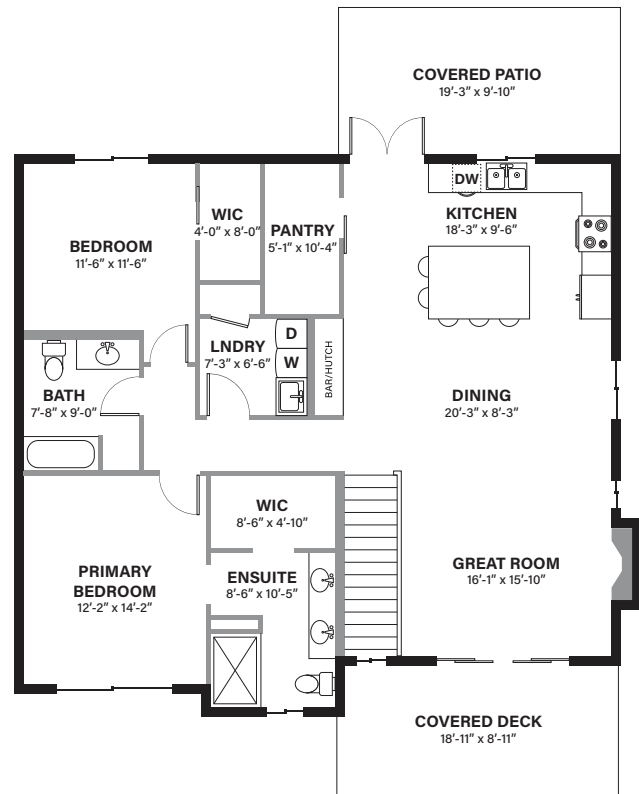
LIVING SPACE | 2346 SQ FT



MAIN LEVEL



UPPER LEVEL



In a continuing effort to improve our product, we reserve the right to modify or change the plans and specifications without notice. Floor plans and renderings are conceptual marketing drawings only. All dimensions and sizes are approximate. E&OE.

CONTACT TARYN TYMOFICHUK | 250-258-9838 | ttymofichuk@emilanderson.ca

KUIPERS PEAK

UNIT 29 - 796 KUIPERS CRESCENT

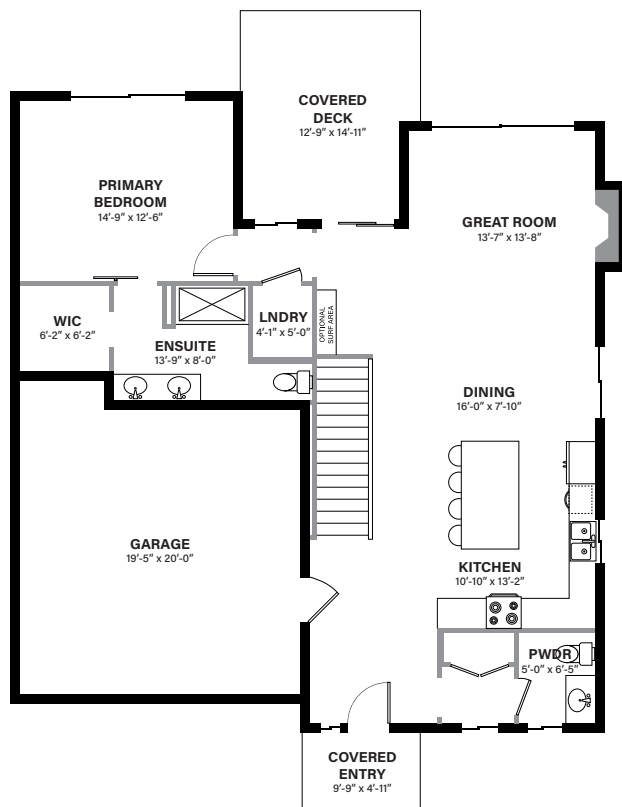
3 BEDROOM | 2.5 BATHROOM

MAIN LEVEL 1219 SQ FT | WALK-OUT LEVEL 1019 SQ FT

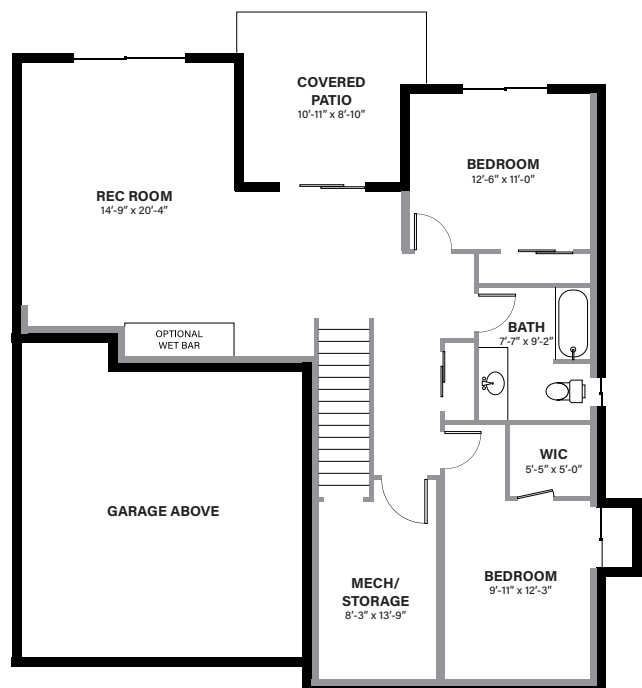
LIVING SPACE | 2238 SQ FT



MAIN LEVEL



WALK-OUT LEVEL



In a continuing effort to improve our product, we reserve the right to modify or change the plans and specifications without notice. Floor plans and renderings are conceptual marketing drawings only. All dimensions and sizes are approximate. E&OE.

CONTACT TARYN TYMOFICHUK | 250-258-9838 | ttymofichuk@emilanderson.ca

KUIPERS PEAK

UNIT 30 - 796 KUIPERS CRESCENT

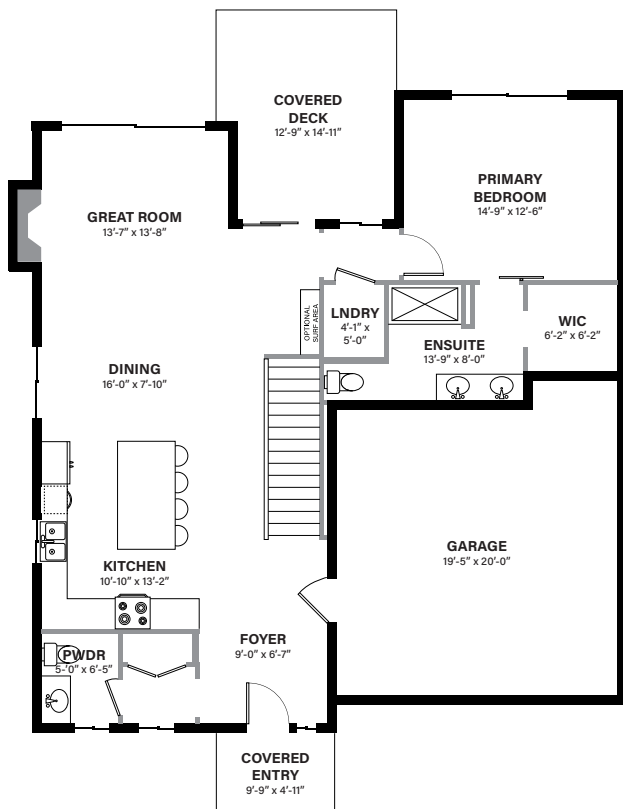
3 BEDROOM | 2.5 BATHROOM

MAIN LEVEL 1219 SQ FT | WALK-OUT LEVEL 1019 SQ FT

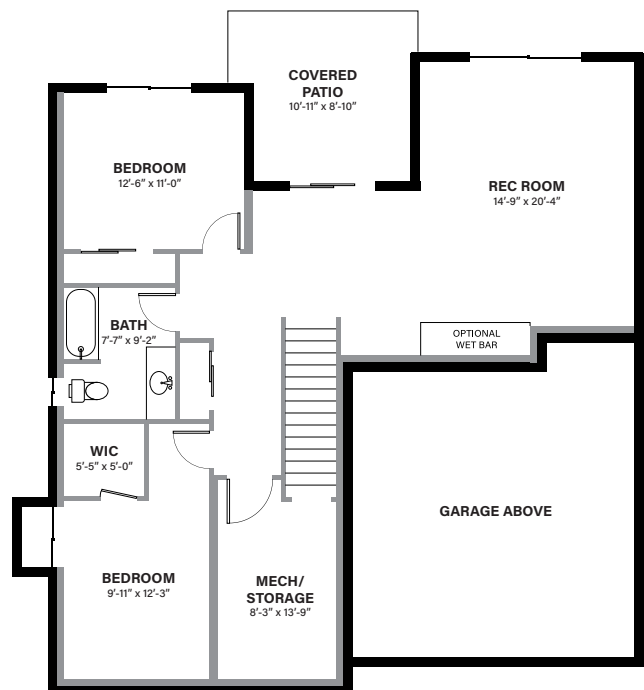
LIVING SPACE | 2238 SQ FT



MAIN LEVEL



WALK-OUT LEVEL



In a continuing effort to improve our product, we reserve the right to modify or change the plans and specifications without notice. Floor plans and renderings are conceptual marketing drawings only. All dimensions and sizes are approximate. E&OE.

CONTACT TARYN TYMOFICHUK | 250-258-9838 | ttymofichuk@emilanderson.ca

KUIPERS PEAK

UNIT 31 - 796 KUIPERS CRESCENT

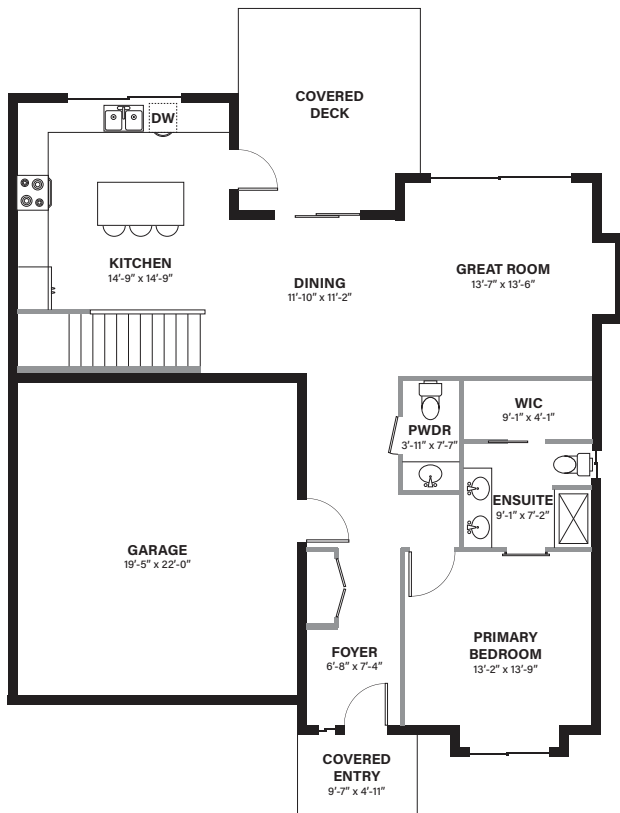
3 BEDROOM | 2.5 BATHROOM

MAIN LEVEL 1187 SQ FT | WALK-OUT LEVEL 937 SQ FT

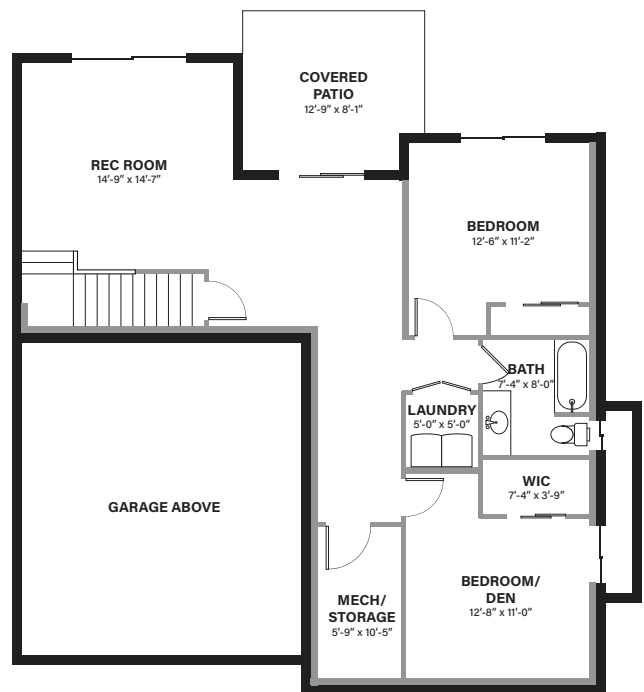
LIVING SPACE | 2124 SQ FT



MAIN LEVEL



WALK-OUT LEVEL



In a continuing effort to improve our product, we reserve the right to modify or change the plans and specifications without notice. Floor plans and renderings are conceptual marketing drawings only. All dimensions and sizes are approximate. E&OE.

CONTACT TARYN TYMOFICHUK | 250-258-9838 | ttymofichuk@emilanderson.ca

KUIPERS PEAK

UNIT 32 - 796 KUIPERS CRESCENT

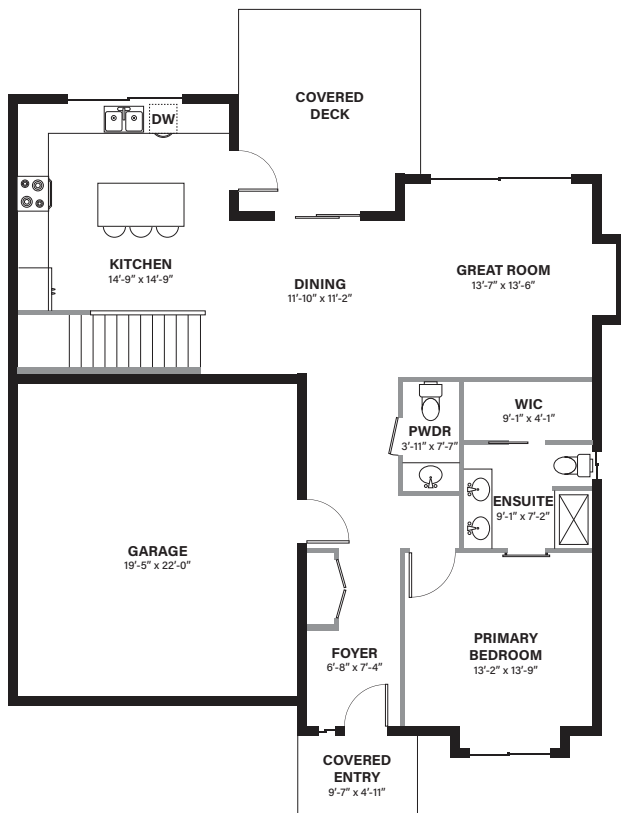
3 BEDROOM | 2.5 BATHROOM

MAIN LEVEL 1187 SQ FT | WALK-OUT LEVEL 937 SQ FT

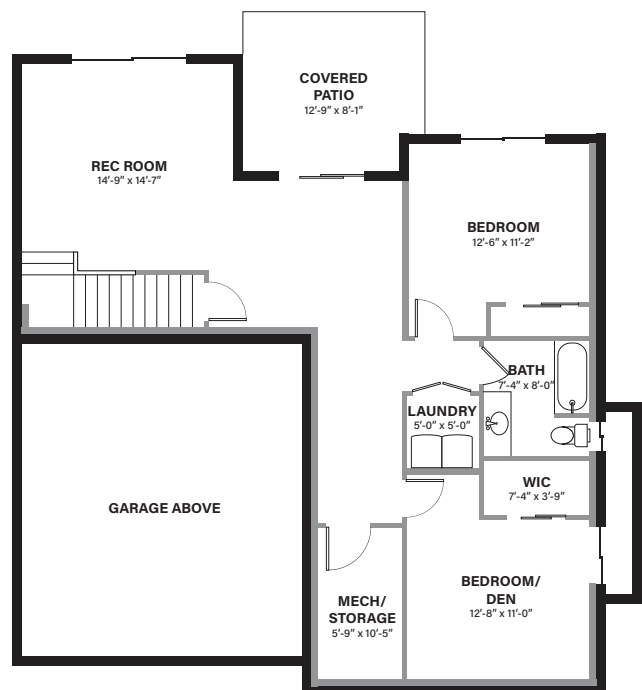
LIVING SPACE | 2124 SQ FT



MAIN LEVEL



WALK-OUT LEVEL



In a continuing effort to improve our product, we reserve the right to modify or change the plans and specifications without notice. Floor plans and renderings are conceptual marketing drawings only. All dimensions and sizes are approximate. E&OE.

CONTACT TARYN TYMOFICHUK | 250-258-9838 | ttymofichuk@emilanderson.ca